

Jinonický dvůr, 2nd stage



Uponor involvement

- ✓ Pre-insulated Unipipe PLUS 16-32 mm a Uponor MLC 40-63 mm for water distribution and heating (approx. 4000 m in total) Ecoflex Aqua, Thermo and Supra for distribution between buildings from the central boiler room (approx. 450 m in total).

2. Stage of the Jinonický dvůr project in Prague 5

Reconstruction of the historic building into 46 apartments and 4 studios using Uponor products.

These are modern apartments created in a historical building. The Uponor Unipipe PLUS a system was used inside the buildings for a complete solution of water distribution and heating Uponor MLC in dimensions from 16 to 63 mm. In small dimensions, the system was already used in a pre-insulated version to speed up assembly. A connection is made between the objects using a pre-insulated pipe Ecoflex Thermo and Aqua.

Project Facts:

Completion
2022

Vertical markets
Multifamily

Application categories
Plumbing, Pre-Insulated Systems

Address
Na Vidouli 1/1, Prague

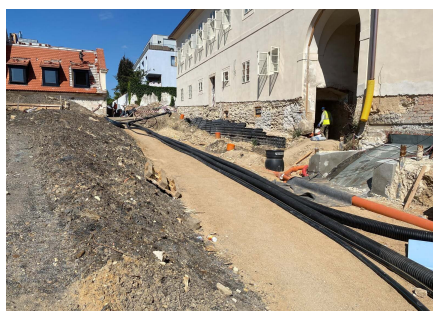
Project Type
Renovation

Reconstruction of a historic building with historic preservation and construction of 46 apartments with commercial buildings and studios

During the renovation of the cultural monument, particular emphasis was placed on hygienic pipes that meet the requirements and guidelines for drinking water. And that's why we used our unique Uni Pipe Plus multilayer pipe system for drinking water installation, which boasts a smoothly pressed aluminum layer. This means that the water pipe does not have a

welded seam and has a different composition and properties than, for example Uponor PE-Xa. We supply composite pipes in rods or coils. The advantage of this system is 100% resistance to oxygen diffusion, simple handling, low weight and, above all, high shape stability and flexibility in bending.

Jinonický dvůr, 2nd stage





uponor

Uponor North America

Uponor North America
5925 148th Street West
Apple Valley, MN 55124

General: 800.321.4739
Fax: 952.891.2008

W www.uponor.com