



RADIANT HEATING AND COOLING SYSTEMS

CLIMATE CÖNTROL™ NETWORK SYSTEM TOUCH PANEL INTERFACE SETUP

INSTRUCTION SHEET

Uponor Climate Cöntrol™ Network System Touch Panel Interface Setup

Setup Instructions

After successfully installing the Climate Cöntrol Network Touch Panel Interface (TPI) unit, initialize, configure and set up the TPI. In some cases, it may be necessary to set up the system after a previous configuration. Instructions are outlined in the following three sections.

- Initializing the TPI
- Configuring the TPI
- Setup of the TPI after Configuration

Initializing the TPI

1. Apply 24VAC power to the TPI. The TPI will take several minutes to initialize.
3. Once the TPI has initialized, the System Setup – Home screen will display. See **Figure 1**.



Important: The TPI is a full-wave rectified device. It cannot share power with the router or other controllers. It must have its own dedicated power supply.

2. Connect the TPI to the local network hosting the Climate Cöntrol Network System.

Note: If the TPI has been configured, proceed to **Setup of the TPI after Configuration** on **page 5**.

Configuring the TPI

1. Press the Set Device ID button as indicated (outlined in red) in **Figure 1**.

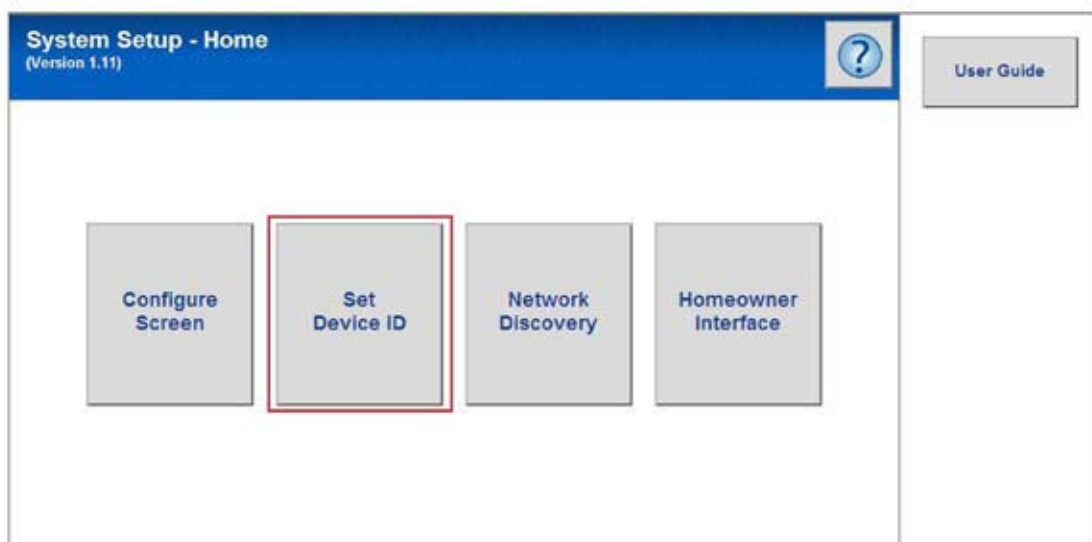


Figure 1: System Setup – Home Screen

Result: The Set Device ID screen appears, featuring an interactive keypad.



Important: Each TPI installed within a system must have a unique device ID (device address). The available device ID numbers that can be set are 40 to 99. For consistency, Uponor recommends starting with number 40, then 41,...etc.

2. To correctly set the device address, the system address will be required. The system address is the number associated with the Main Router Control (RTR) and ends in "00".
3. For our example, system address 9700 is used. Use the key pad to enter the device address 9740 as the device address (see Figure 2).
4. Select OK

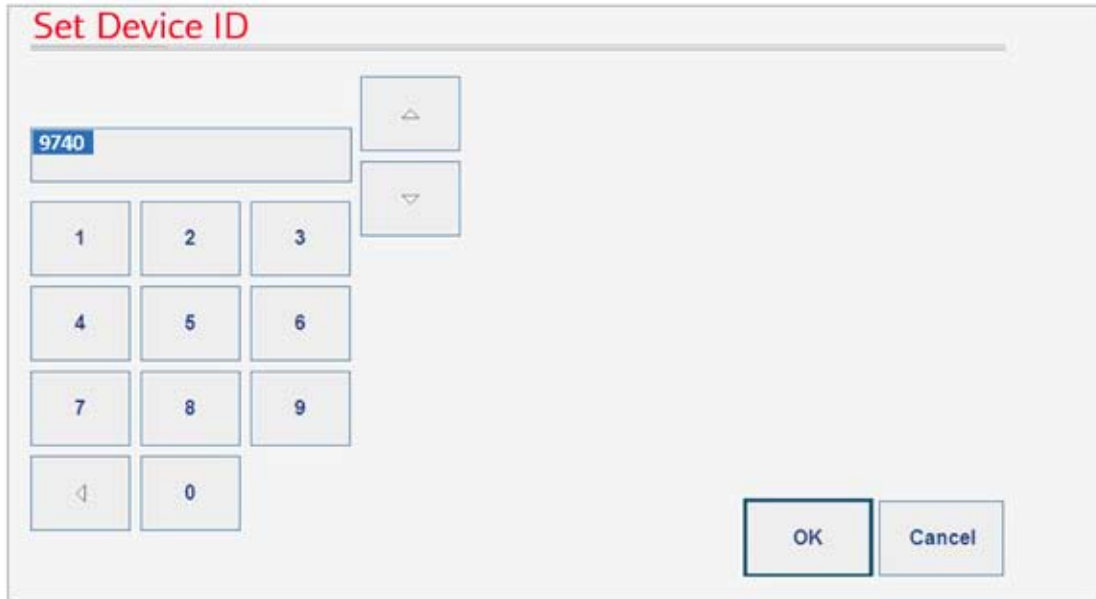


Figure 2: Set Device ID Screen

Result: The system will respond with the following Yes/No prompt as shown in **Figure 3**: Changing the device ID will reset the device. Do you wish to continue?

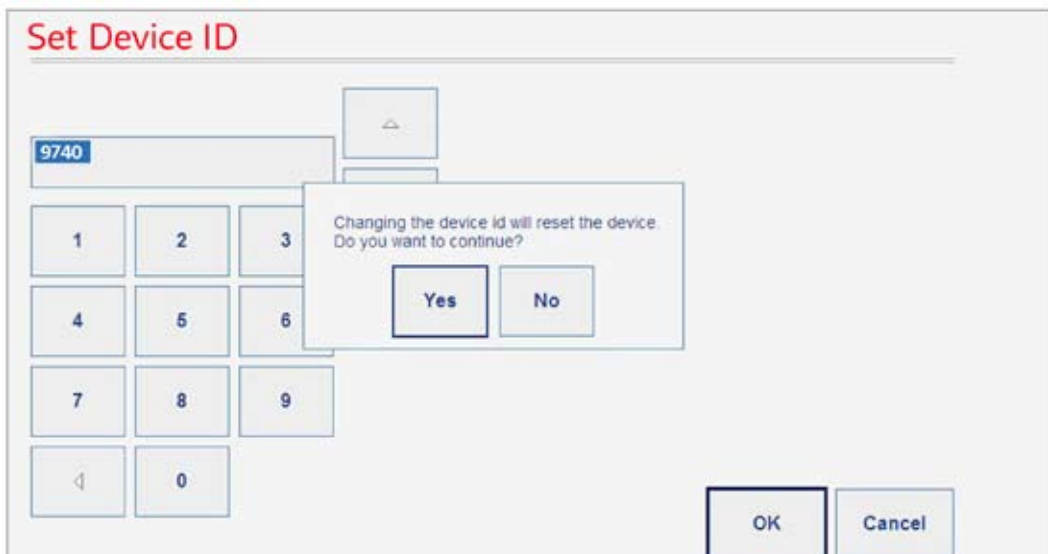


Figure 3: Reset Device ID Prompt

After the system resets the device, the display returns to the System Setup - Home screen as shown in **Figure 4**.

5. Select the Network Discovery tab.

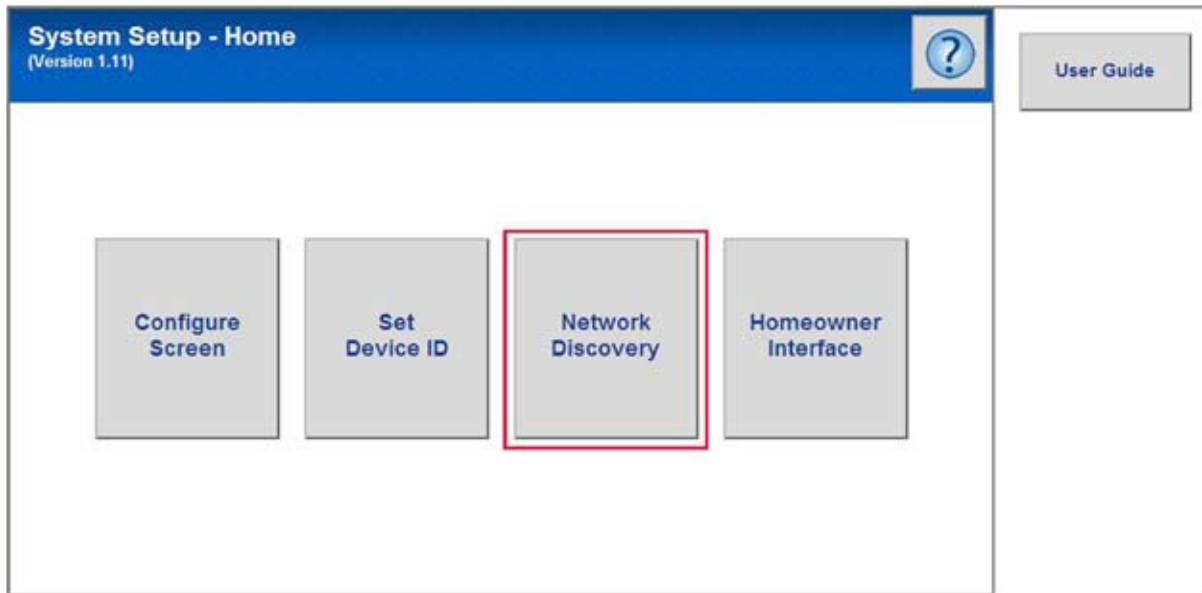


Figure 4: System Setup - Home Screen

Result: The System Setup – Network Discovery screen appears displaying an interactive keypad.

6. Use the keypad to enter the address of your Climate Cōntrol Network System Router into the address field. For example, if the Router Address is 9700, type 9700 as shown in **Figure 5**.
7. Select the Discover Network tab.



Figure 5: Router Address Entry (Example)

Result: The System Setup – Network Discovery screen displays all the devices found on the Climate Cōntrol Network System as illustrated in **Figure 6**.

Note: It may take several minutes for the system to detect and complete the list of devices on the network.

8. When Network Discovery completes the list, press the Save Configuration tab.

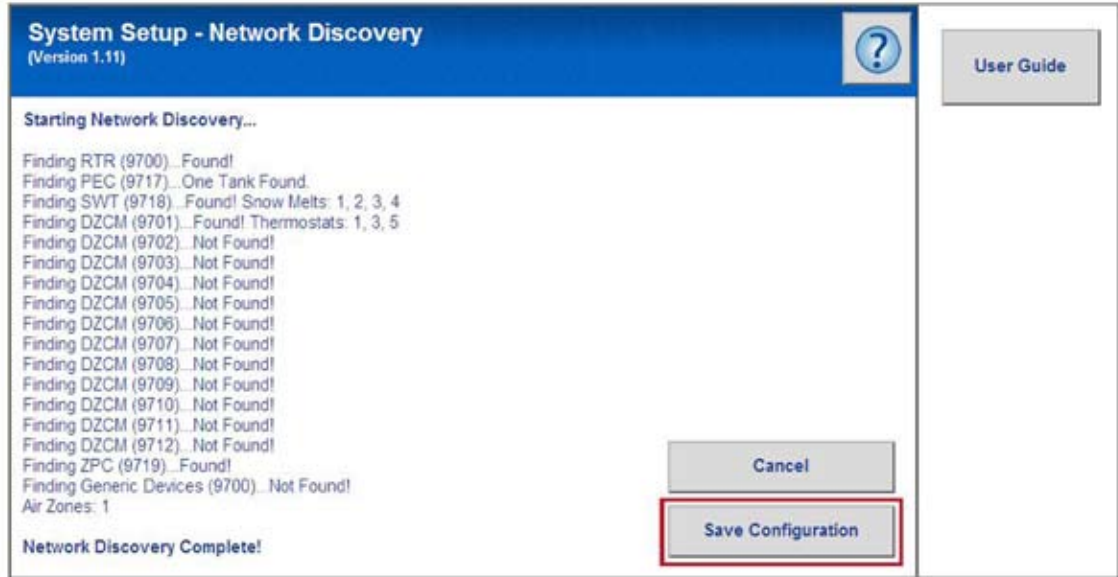


Figure 6: Network Devices Found

Result: The System Setup – Home screen appears (see **Figure 7**).

9. Select the Homeowner Interface tab.

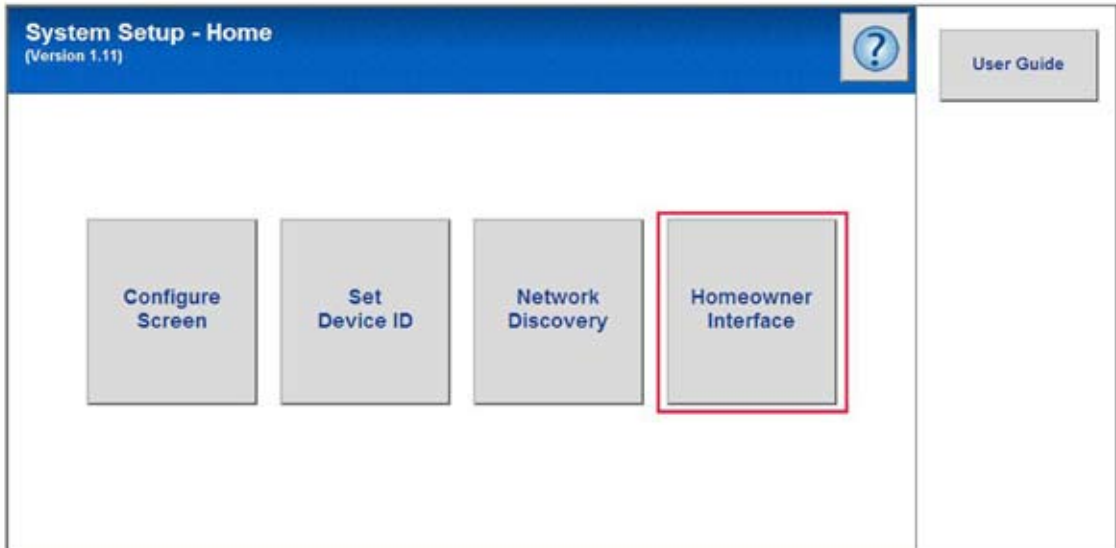


Figure 7: System Setup-Home Screen

Result: The List of Thermostats screen appears as shown in **Figure 8**. This is the main menu screen for all thermostats in the network system.

Setup of the TPI after Configuration

1. For demonstration purposes, the name of the configured network system we are using is Cottage Climate. From the List of all Thermostats screen, press the Global Mode button (see **Figure 8**).



Figure 8: List of all Thermostats Screen

Result: The Global Properties: Global Mode screen appears (see **Figure 9**).

2. Select the Global Properties tab at the bottom of the screen (see **Figure 9**).

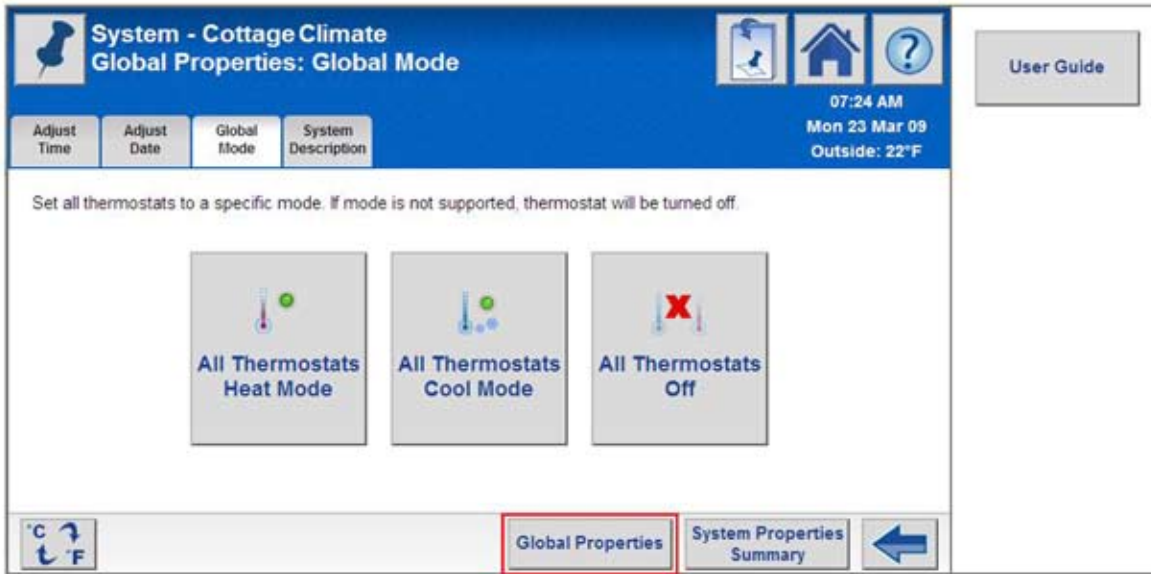


Figure 9: Global Properties: Global Mode Screen

Result: The Global Properties menu screen appears (see **Figure 10**).

3. Press the System Description tab.

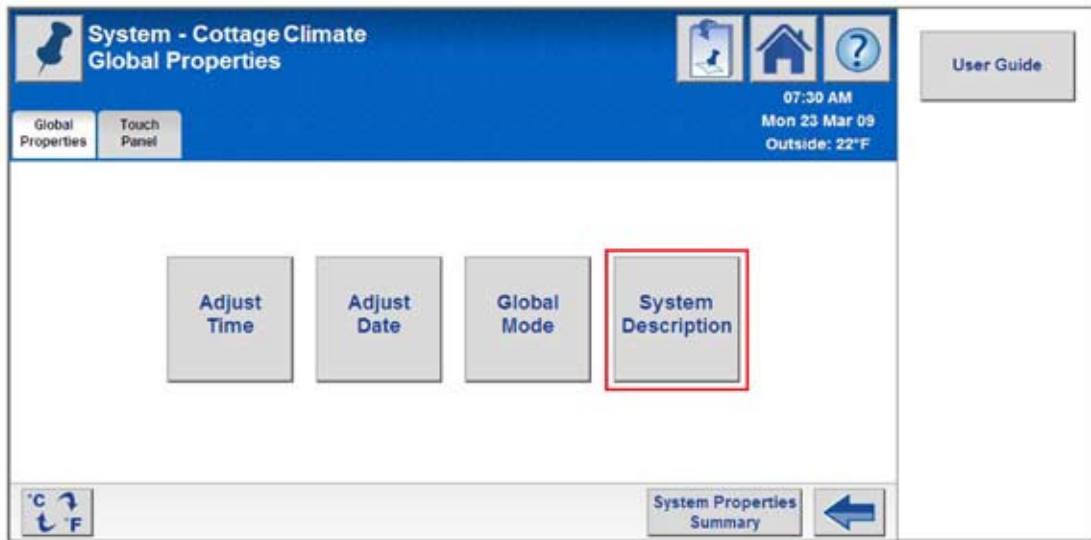


Figure 10: Global Properties Screen

Result: The Global Properties: System Description screen appears (see **Figure 11**).

4. Press the System Setup tab.

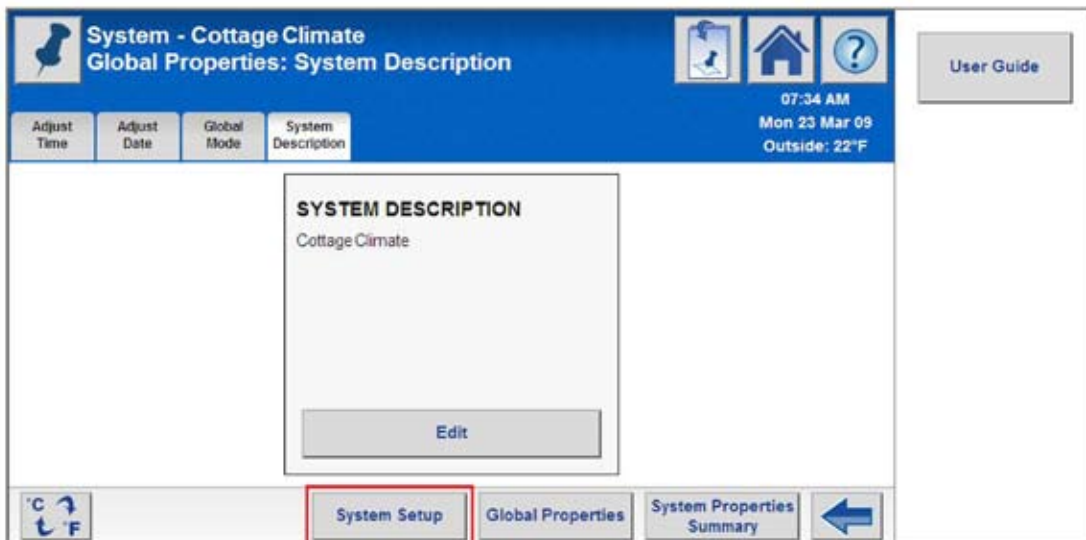


Figure 11: Global Properties: System Description

Result: The System Setup keypad for contacting support appears. Refer to **Figure 12**.



Figure 12: Keypad for Contacting Support

Password is UponoR (case-sensitive). Use the interactive keypad to enter this password.

- Press the Lock button and enter "U".
- Press the Lock button and enter "p o n o".
- Press the Lock button and enter "R".
- Press OK.

Return to **Configuring the TPI** on **page 1** and follow the directions.

Uponor, Inc.
5925 148th Street West
Apple Valley, MN 55124 USA
Tel: (800) 321-4739
Fax: (952) 891-2008
Web: www.uponor-usa.com

Uponor Ltd.
2000 Argenta Rd., Plaza 1, Ste. 200
Mississauga, ON L5N 1W1 CANADA
Tel: (888) 994-7726
Fax: (800) 638-9517
Web: www.uponor.ca

The logo for Uponor, featuring the word "uponor" in a bold, blue, lowercase sans-serif font.